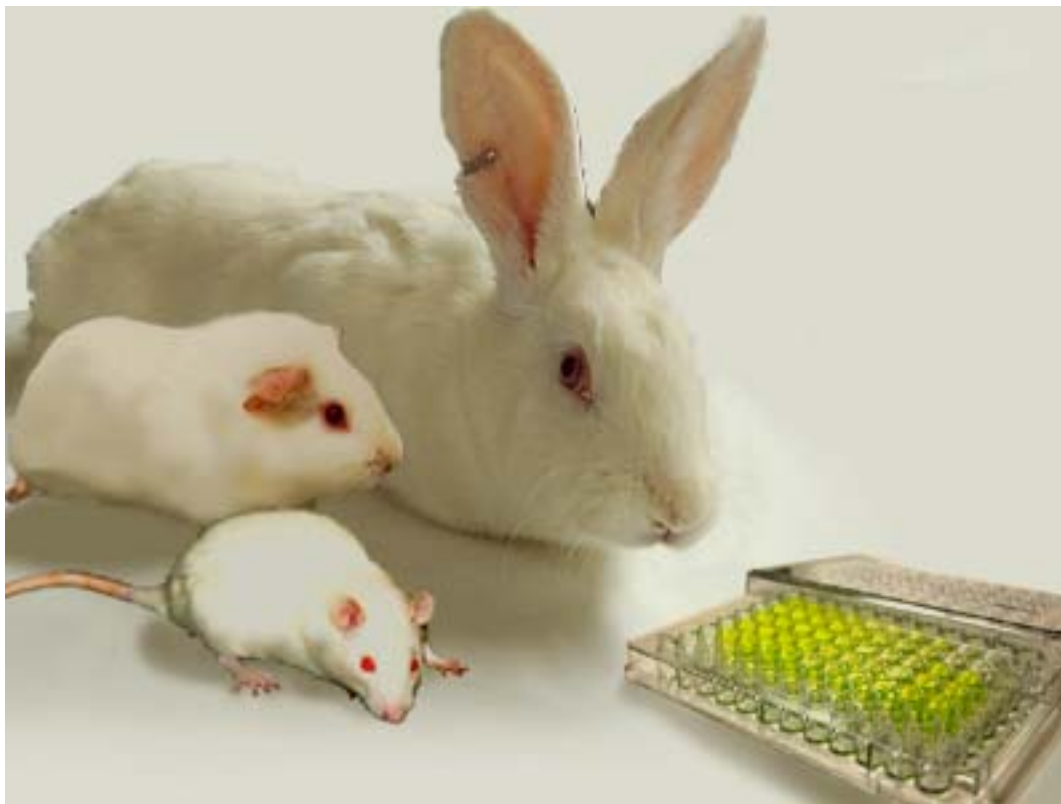


TOXNOTE

In Vivo Toxicology Services



MB Research Laboratories conducts acute, subchronic, chronic toxicology and pharmacology studies. Standard studies at MB are available to meet the product safety testing requirements of the applicable regulatory agencies, or tailored to meet the specific need of the client.

Acute Toxicology

Acute studies are selected and conducted based on the intended use of the test substance and applicable regulatory requirements. Standard protocols are available upon request that meet the following guidelines:

FDA, EPA, OECD, OPPTS, ISO, ICT, DOT, REACH

- Dermal Irritation and Contact Sensitization Studies
- Oral and Inhalation Studies
- Mucosal Irritation Studies
- Eye Irritation Studies

MTD, Subchronic and Chronic Toxicology

Maximum Tolerated Dose/Dose Range Finding, subchronic and chronic toxicology studies are routinely conducted at MB Research in various species using a variety of routes of administration. These studies are individually designed for the sponsor in order to comply with specific regulatory requirements and intended use of the test substance.

Studies are performed by highly trained and qualified personnel and are closely supervised by a senior Toxicologist at every phase.

Our Study Directors communicate actively with each client. Preliminary results are often available within a day of study completion. Draft reports for acute studies are normally available within 3-4 weeks of study completion.

MB Research has partnered with several laboratories to offer other testing services such as Pathology, which are conducted under the direction of a Board Certified Veterinary Pathologist. Ophthalmology services are available through a leading Veterinary Ophthalmologist, and analytical chemistry.

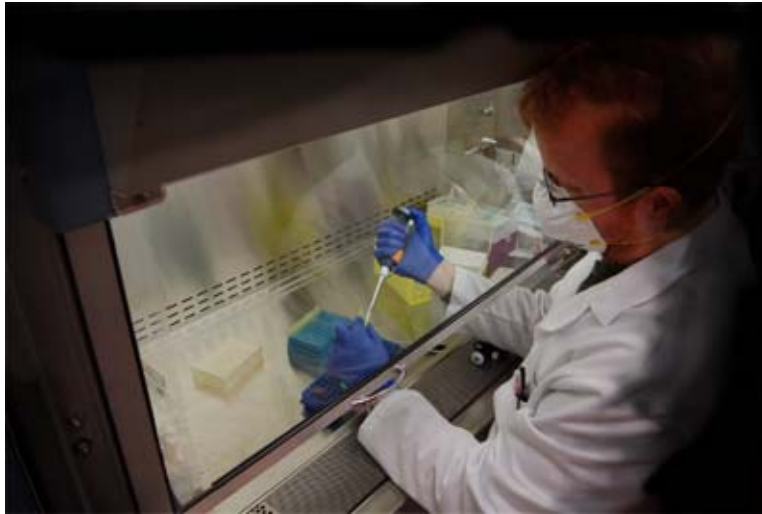
Other Testing Capabilities

- Pharmacokinetic Studies
- Emesis Studies
- Wound Healing Studies
- Muscle Implantation Studies
- Phototoxicity/Photoirritation Studies

Accreditation



MB Research has been continuously accredited by the Association for Assessment and Accreditation of Laboratory Animal Care, International (AAALAC) since 1975. At the last AAALAC site inspection MB was praised for its clear and definite commitment to quality animal care and alternative programs. The laboratory is licensed by the USDA and meets the standards set forth in the Animal Welfare Act regulations. MB has an active and effective Institutional Animal Care and Use Committee (IACUC), which supervise all animal use in the laboratory. The facility is certified by the federal Drug Enforcement Administration and the Pennsylvania Department of Health in compliance with each agency's regulations for the use of controlled substances.



Background

MB Research Laboratories, a GLP contract research laboratory, has been conducting acute, subchronic / chronic toxicology and pharmacology studies since 1972. With expertise in many areas of in vivo and in vitro testing, research, and safety evaluations, MB Research serves the testing needs of both government and industry.

Complete support services including consultation, protocol development, quality assurance, analytical chemistry and archive facilities are integral components of studies performed at MB. Our technical and support procedures are in full compliance with OECD, FDA, and EPA.

Facilities

MB Research Laboratories is housed in 16,000 ft² of total space in two buildings located approximately 40 miles north of Philadelphia. The facilities include a vivarium, alternatives laboratories, a cell culture laboratory, as well as laboratory support areas for test article storage, sample preparation, food and bedding storage, cage washing, tissue and document storage, and necropsy. Offices for study directors, quality assurance, administration, clerical, technical staff and archives are located in Building A. Building B, the original research building, is now used primarily for inhalation toxicity tests and special research studies. There are 10 to 15 air changes per hour of 100% fresh air supplied to each animal room. The animal quarters are equipped with an automatic 12-hour light/dark cycle and automatic watering system

Custom Assays and Protocol Development Services
are also available upon request.

